

ON SITE MEETING

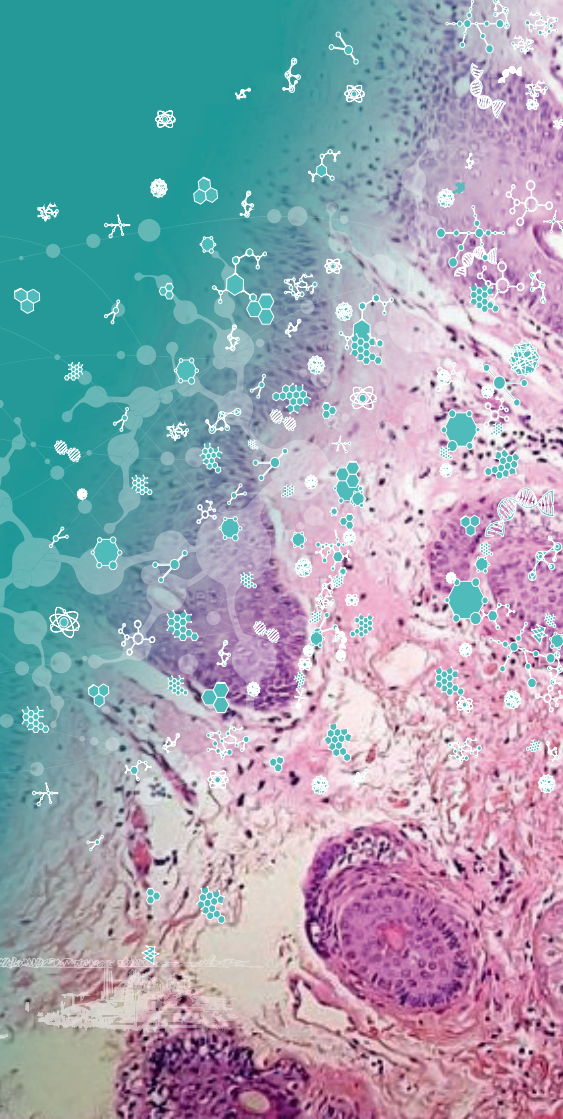
PATHOLOGISTS IN VENICE:



REAL WORLD CASES FOR
AN IMMERSIVE TRAINING EXPERIENCE

December 12-13, 2024

SS. Giovanni e Paolo Hospital, Venice, Italy



RATIONALE

Pathological diagnoses are becoming a very complicated medical field due to the advent of many different biomarker needs both for the identification of histological and molecular oncogene targets and immunotherapy-related bioselectors (i.e. PD-1/PD-L1 axis).

The CME meeting will host 4 “MASTERS” in pathology and thanks to the application of an innovative digital pathology platform will offer to the participants the unique possibility of exploring the crucial diagnostic criteria of the following pivotal fields:

• **BREAST PATHOLOGY** • **CYTOPATHOLOGY** • **GASTROINTESTINAL PATHOLOGY** • **SOFT TISSUE PATHOLOGY**

This educational meeting will explore, through discussion of challenging real pathological clinical cases diagnosed according to the latest cancer diagnostic criteria, including extensive molecular characterization by NGS and omics, several possible diagnostic patterns.

The course will gather participants from all over the world with the main objective to get participants in the “navigation” of cases by world opinion leaders to stimulate the consolidation of diagnostic skills through the development of strategic thinking.

Cases will be selected through integration of clinical-pathological data with the mutational landscape and the immunological background/status of the patients for a representative overview of the difficult diagnostic process in oncology and immunosuppression context.

Through innovative digital pathology technological approaches, the cases will be presented in a manner that allows the fundamental diagnostic and management aspects to be addressed.

While viewing the cases, participants will be able to challenge themselves on dilemmas posed by the speakers in quizzes that will engage them in an interactive manner increasing learning and participation.

SCIENTIFIC PROGRAM - DAY 1

- 08.30 – 09.00 Registration and Welcome 📄
09.00 – 09.30 Institutional greetings and Introduction - Aldo Scarpa & Angelo Paolo Dei Tos

FIRST SESSION - Liron Pantanowitz

- 09.30 – 10.30 Evolving Horizons in Cytopathology
10.30 – 11.00 Coffee break ☕
11.00 – 12.30 An immersion in a Cytopathology case mix - featuring Stefano Marletta
12.30 – 13.00 Game & digital competition 🎮
13.00 – 14.00 Lunch 🍴

SECOND SESSION – Fatima Carneiro

- 14.00 – 15.00 Pearls and Pitfalls in Gastrointestinal Pathology
15.00 – 16.30 An immersion in a GI case mix - featuring Matteo Fassan
16.30 – 17.00 Coffee break ☕
17.00 – 17.30 Game & digital competition 🎮
17.30 – 17.35 Video Mapping Showcase: The day ends with “fireworks” over Venice 🎆

SCIENTIFIC PROGRAM - DAY 2

09.15 – 09.30 Introduction to Day 2 - Aldo Scarpa & Angelo Paolo Dei Tos

THIRD SESSION - Stuart J. Schnitt

09.30 – 10.30 Breakthroughs in Breast Pathology: A Transformative Journey

10.30 – 11.00 Coffee break 

11.00 – 12.30 An immersion in a Breast Pathology case mix - featuring Vincenzo L'Imperio

12.30 – 13.00 Game & digital competition 

13.00 – 14.00 Lunch 

FOURTH SESSION - Angelo Paolo Dei Tos

14.00 – 15.00 Frontiers of Soft Tissue Pathology: Exploring Key Advances and Diagnoses

15.00 – 16.30 An immersion in a Soft Tissue Pathology case mix - featuring Marta Sbaraglia

16.30 – 17.00 Game & digital competition 

17.00 – 17.45 Award Ceremony of Participants – Faculty and participants 

17.45 – 18.00 Closing Remarks - Aldo Scarpa & Angelo Paolo Dei Tos

THE MASTERS



FÁTIMA CARNEIRO

Department of Pathology, Centro Hospitalar
Universitário de São João (CHUSJ),
Department of Pathology, Faculty of Medicine of
the University of Porto (FMUP) & Ipatimup/i3S,
Porto, Portugal



LIRON PANTANOWITZ

Department of Pathology, University of
Pittsburgh Medical Center, Pittsburgh,
Pennsylvania, USA



ANGELO PAOLO DEI TOS

Professor of Pathology, University of Padua
School of Medicine. Director, Department of
Integrated Diagnostics, Azienda Ospedale
Università Padova, Italy



STUART J. SCHNITT

Department of Pathology, Brigham and Women's
Hospital and Harvard Medical School, Breast
Oncology Program, Dana-Farber/Brigham
Cancer Center, Boston, MA, USA

PRESIDENTS OF THE CONGRESS

ANGELO PAOLO DEI TOS

Professor of Pathology, University of Padua School of Medicine. Director, Department of Integrated Diagnostics, Azienda Ospedale Università Padova, Italy

ALDO SCARPA

Department of Pathology and Diagnostics, University and Hospital Trust of Verona, Verona, Italy

FACULTY

ALBINO ECCHER

Department of Medical and Surgical Sciences, University of Modena and Reggio Emilia, Modena, Italy

MATTEO FASSAN

Department of Medicine, University of Padua and Department of Pathology, Ca' Foncello Hospital, ULSS2 Marca Trevigiana, Treviso, Italy

LICIA LAURINO

Pathology Department, ULSS3 Serenissima and ULSS4 Veneto Orientale, UOC Anatomy and Pathologic Histology Hospitals of Mestre, Venezia, Dolo, Mirano and Chioggia, Italy

VINCENZO L'IMPERIO

Department of Medicine and Surgery, Pathology, University of Milano Bicocca, IRCCS Fondazione San Gerardo dei Tintori, Monza, Italy

STEFANO MARLETTA

Division of Pathology, Humanitas Istituto Clinico Catanese, Catania, Italy

FABIO PAGNI

Department of Medicine and Surgery, Pathology, University of Milano-Bicocca, IRCCS Fondazione San Gerardo dei Tintori, Monza, Italy

MARTA SBARAGLIA

Department of Pathology, Azienda Ospedale Università Padova, Padova, Italy

ACCREDITATION

ITALIAN CME ACCREDITATION FOR ITALIAN ATTENDEES

ITALIAN TARGET AUDIENCE

PROFESSION:

PHYSICIAN

DISCIPLINES:

Clinical Biochemistry, Clinical Pathology, Dermatology and venereology, Gynecology and obstetrics, Oncology, Pathology, Pediatrics, Radiodiagnostics, Radiotherapy.

PROFESSION/DISCIPLINES:

BIOLOGIST, BIOMEDICAL LABORATORY HEALTH TECHNICIAN, MEDICAL RADIOLOGY HEALTH TECHNICIAN

Italian CME credits will be granted to those participants who attend at least 90% of scientific works, fill in the questionnaire assessment of perceived quality and respond correctly at least 75% of the questions in the evaluation questionnaire learning.

EVENT ID: 2157- 403643

CME ITALIAN CREDITS: 8,4

UEMS-EACCME® ACCREDITATION

The Pathologists in Venice, Venice, Italy 12/12/2024 - 13/12/2024, has been accredited by the European Accreditation Council for Continuing Medical Education (EACCME®) with 10.0 European CME credits (ECMEC®s). Each medical specialist should claim only those hours of credit that he/she actually spent in the educational activity.

Through an agreement between the Union Européenne des Médecins Spécialistes and the American Medical Association, physicians may convert EACCME® credits to an equivalent number of AMA PRA Category 1 Credits™. Information on the process to convert EACCME® credit to AMA credit can be found at <https://edhub.ama-assn.org/pages/applications>.

Live educational activities, occurring outside of Canada, recognised by the UEMS-EACCME® for ECMEC®s are deemed to be Accredited Group Learning Activities (Section 1) as defined by the Maintenance of Certification Program of the Royal College of Physicians and Surgeons of Canada.

LANGUAGE:

English - No simultaneous translation.

ONLINE REGISTRATION

To join the meeting please register to this link: <https://pathologistsinvenice.com> or scan the QR CODE.
The registration fee for the complete course for attendees as follow:



ATTENDEES	EARLY BIRD FEE* April 30th, 2024	FEE* from May, 01st 2024
Physicians, Biologist	449.00 €	499.00 €
Members of SIAPEC	404.00 €	449.00 €
Residents	314.00 €	349.00 €

*Italian VAT 22% included.

Registrations are limited and open until November, 30th 2024. Registration is confirmed only once payment has been verified. Cancellation notices must be in writing to info@medicacom.it and received by 23:59 PM Central Europe Time (CET) to be eligible for a refund:

- Cancellation until October, 5th 2024: refund of 50% of the registration fee.
- Cancellation from October, 6th 2024: no refunds will be made after this date.

WITH THE PATRONAGE OF



ESDIP
EUROPEAN SOCIETY OF DIGITAL AND INTEGRATIVE PATHOLOGY

ORGANIZING SECRETARIAT AND CME PROVIDER

Medica

EDITORIA E DIFFUSIONE SCIENTIFICA

Provider ECM ID 2157

SECRETARIA SCIENTIFICA E ORGANIZZATIVA

Medica - Editoria e Diffusione Scientifica Srl Con Unico Socio

Corso Buenos Aires, 43

20124 Milano

P.IVA/CF 12389610152

T +39 02 76081337

F +39 02 93661695

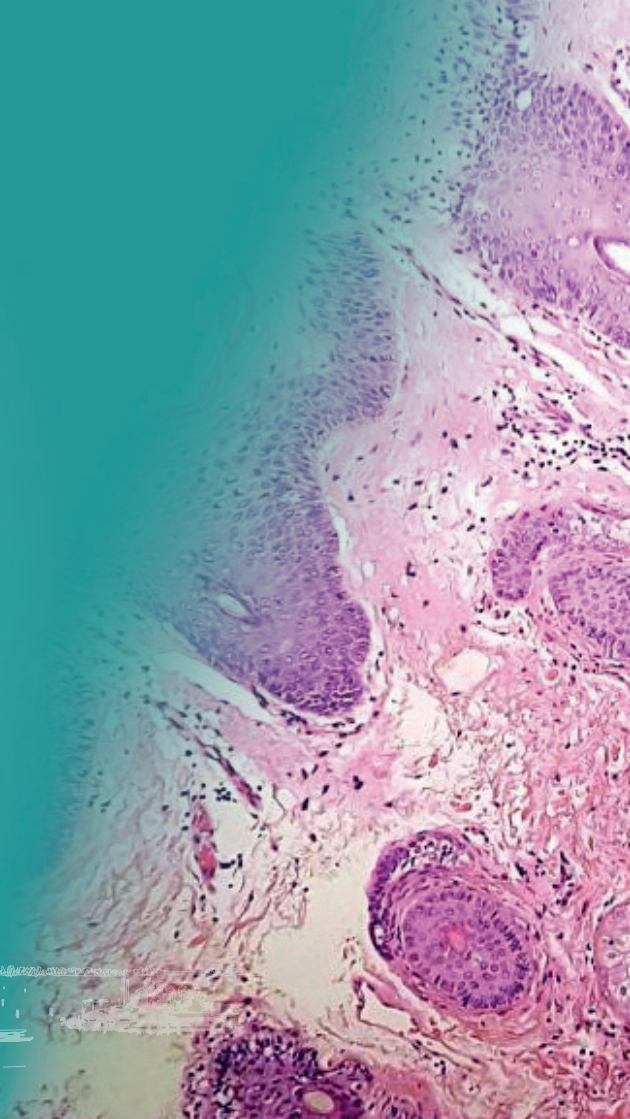
M info@medicascom.it

W www.medicascom.it

UEMS-EACCME PROVIDER



Med-Ex Learning
Education & Events



WITH THE UNRESTRICTED CONTRIBUTION OF

Platinum Sponsor



Gold Sponsor



Silver Sponsor

